

GALERIE

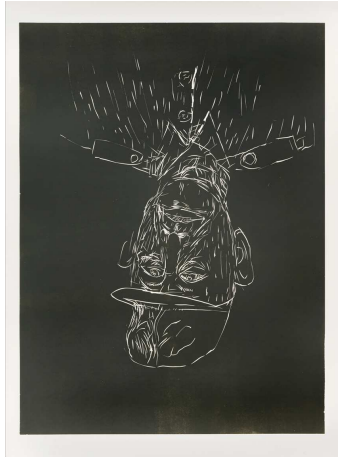
BOISSERÉE

Press text for publication free of charge

All exhibits can be viewed on our homepage and digital image data can be requested.

Exhibition from September 6 – Oktober 26

Georg Baselitz
Veteran – Works on Paper



„Veteran“, linocut 2002

On the occasion of the DÜSSELDORF COLOGNE OPEN GALLERIES from 6 - 8 September 2019, Galerie Boissérée presents Georg Baselitz' graphic oeuvre and works on paper in a solo exhibition.

The German painter, draughtsman, graphic artist and sculptor Georg Baselitz is one of the most important artists of our time. With his radically expressive style, his work influenced figurative painting in the second half of the 20th century.

On the occasion of his 80th birthday last year, international museums such as the Fondation Beyeler and the Kunstmuseum in Basel, the Pinakothek der Moderne in Munich and the Museum Morsbroich in Leverkusen dedicated extensive retrospectives to him. Galerie Boissérée honoured the artist with a studio exhibition of his late graphic oeuvre. In the current exhibition about 90 graphic works as well as works on paper are shown.

The selection of the works was not made with retrospective exhibition in mind. Featuring about 90 works from between 1982 and 2019, it nevertheless encompasses nearly 40 years of his career as an artist. It brings together works on paper (ink, charcoal, pastel and watercolour drawings) as well as woodcuts, linocuts, lithographs, etchings and portfolios. As such, it provides insights into the artist's extremely varied production and its own forms of expression.

Baselitz' art originates from an intellectual analysis. It explains his attitude about time, society and the other contemporary art that surrounds him. Most of his motifs have biographical references. His art is full of energy, but never illustrative.

Most of the phases of his graphic work allow us to trace the processual, the genuine working basis of a "peintre-graveur". Experimenting with techniques, printing processes, papers, etc. is an essential part of this species. This is how Rembrandt and Goya practiced it and in the 20th century Picasso and Matisse.

The exhibition will be accompanied by a catalogue for Euro 10 including domestic shipping.
The opening will take place on September 6 from 6:30 pm.

Galerie Boissérée, Drususgasse 7-11, D - 50667 Köln
(Nähe Dom, WDR, Wallrafplatz und Museum für Angewandte Kunst)
Telefon +49 - (0)221 - 2578519, Telefax +49 - (0)221 - 2578550
galerie@boisseree.com, www.boisseree.com
SO und MO geschlossen, DI-FR 10-18 Uhr, SA 11-15 Uhr